



Silverback Development Commences Closings at HERO LIC

April 22, 2020

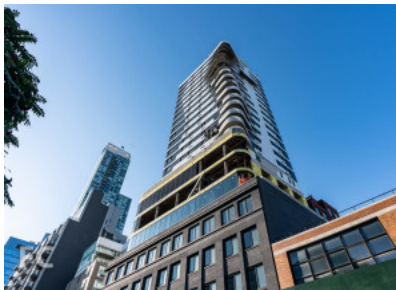


Photo credit: Clifford Troy

New York-based real estate owner, developer and investor Silverback Development has announced that the firm's first project in Long Island City, HERO LIC, has commenced closings and move-ins. Situated at 24-16 Queens Plaza South, HERO LIC is Long Island City's first Art-Moderne skyscraper featuring 109 luxury condominiums with stunning Manhattan views and an expansive lifestyle package. *"Million Dollar Listing New York"* television star Ryan Serhant and The Serhant Team of Nest Seekers International are exclusively handling the sales and marketing of the property.

Amidst the novel coronavirus pandemic, Silverback Development worked with each resident to safely and effectively facilitate the closings and move-ins. To ensure the safety of all involved, each closing was done remotely using a video notary and original documents exchanged via overnight courier. The team conducted buyer walkthroughs via FaceTime, videos and photos. In an extra effort to minimize contact, move-ins are limited to one per day with disinfecting and cleaning services to be scheduled between each move.

"We saw this as an opportunity to be creative and streamline the traditional process of residential closings," said Josh Schuster, managing principal of Silverback Development. "We are committed to innovative execution in all circumstances. As each buyer navigates this crisis, we want to do everything we can to ease any uncertainty in these trying times."

The new residents of HERO LIC will enjoy over 15,000 square-feet of thoughtfully curated amenities as an extension of the home, including a 24-hour doorman, serene lobby and Zen Garden, social parlor and multi-purpose dining room, a state-of-the-art wellness center and

separate yoga studio, a Sky Room lounge with pool table, a rooftop deck with BBQ grills, a 3,000 square-foot open-air veranda with dramatic 30-foot-high ceilings, a pet spa and package room along with bicycle storage. The building is surrounded by the top restaurants, cafes, bars, and shops with easy access to transportation and the stunning Long Island City waterfront and green spaces.

“Silverback Development has developed an iconic building that residents could not wait to move into,” said Ryan Serhant of Nest Seekers. “They went above and beyond to ensure buyers felt safe and confident throughout the process given these unprecedented circumstances.”

Pricing for available residences starts at \$550,000. For more information, visit <https://www.herolic.com> or @theherolic on Instagram.